

DDS Filippo Cardarelli

Dentist

Specialist in Orthodontics

University of Milan



Class II Deep Bite

Patient age 8 years II Class deep dental and skeletal bite, low lingual posture, vestibularization of the upper incisors; initial telerradiography shows reversal of the cervical curve. The therapeutic sequence involves the following steps:

- motivation
- speech therapy
- elastodontic therapy
- elastodontic restraint for approximately 12 months



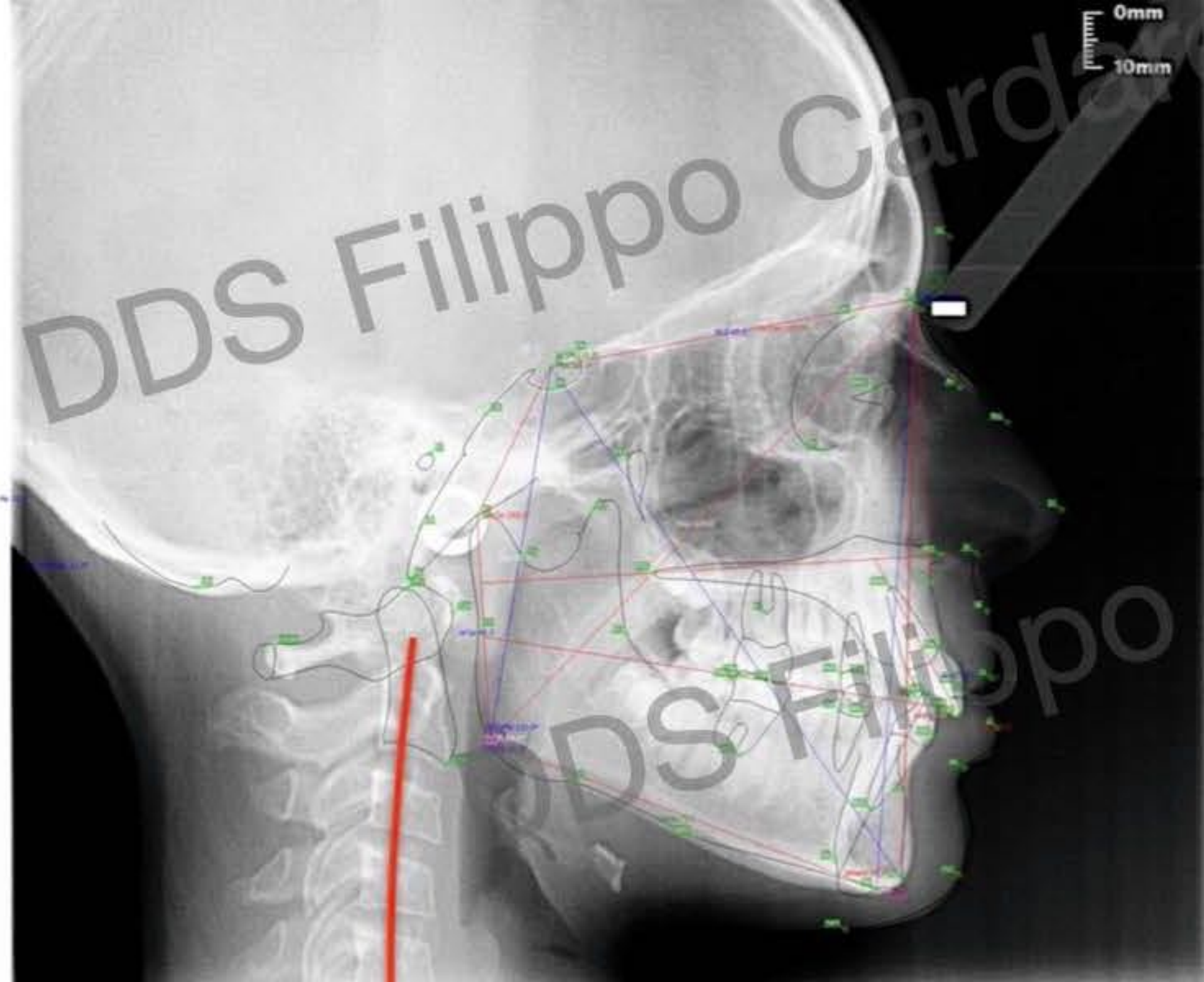
DDS



R

L

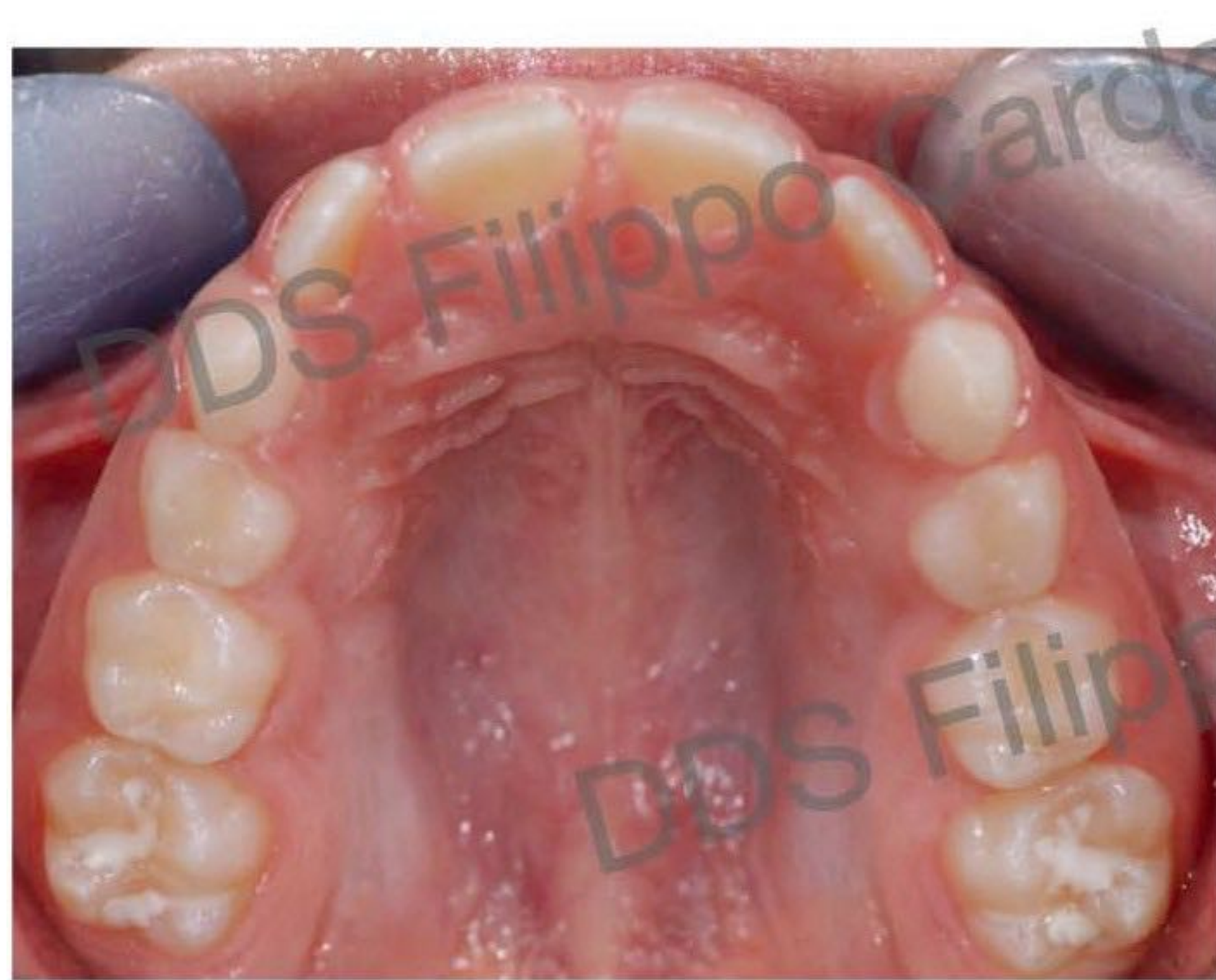
ORTHOALUX



Cardarelli









DDS



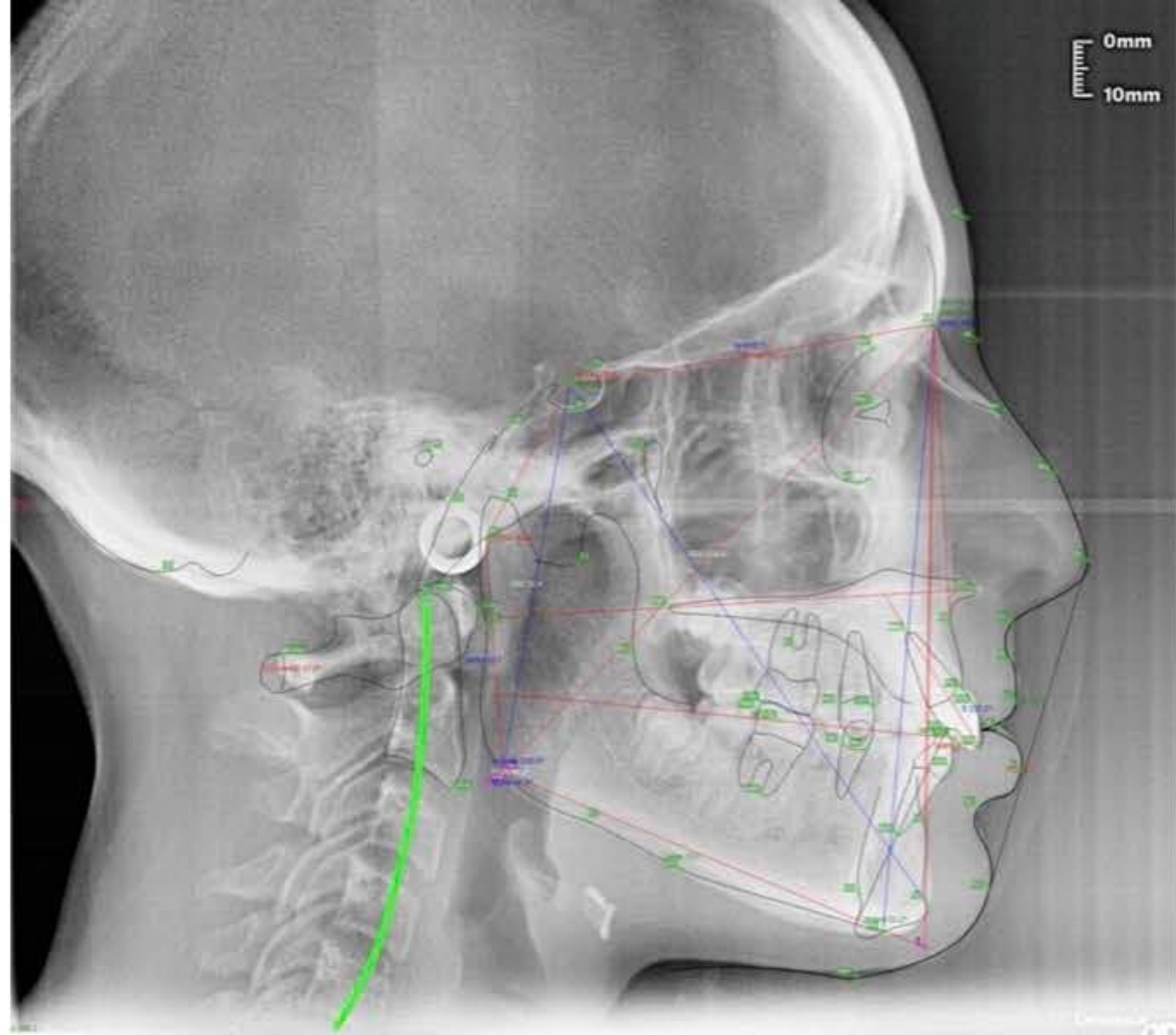
DDS Filippo Cardarelli

DDS Filippo Cardarelli





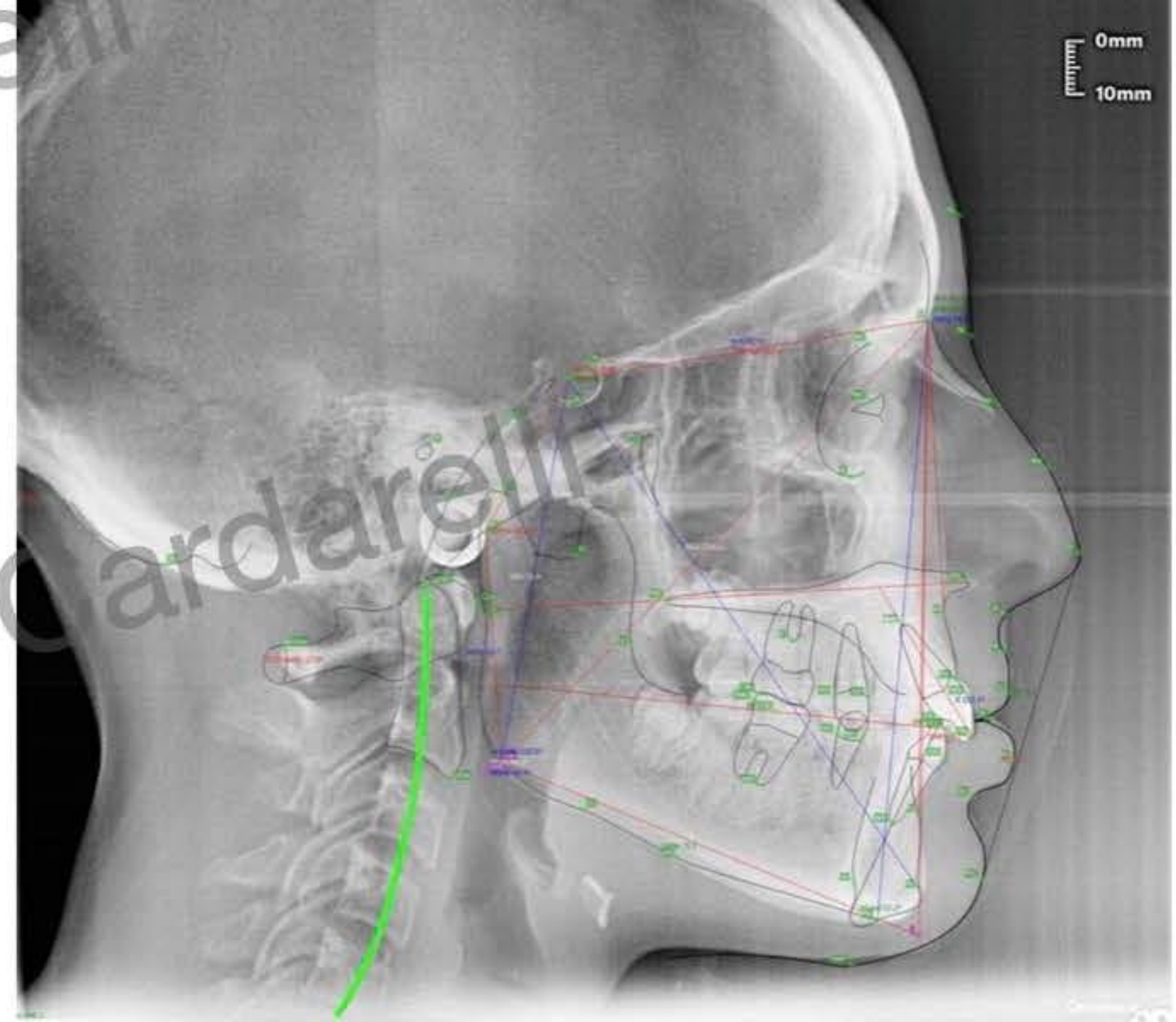
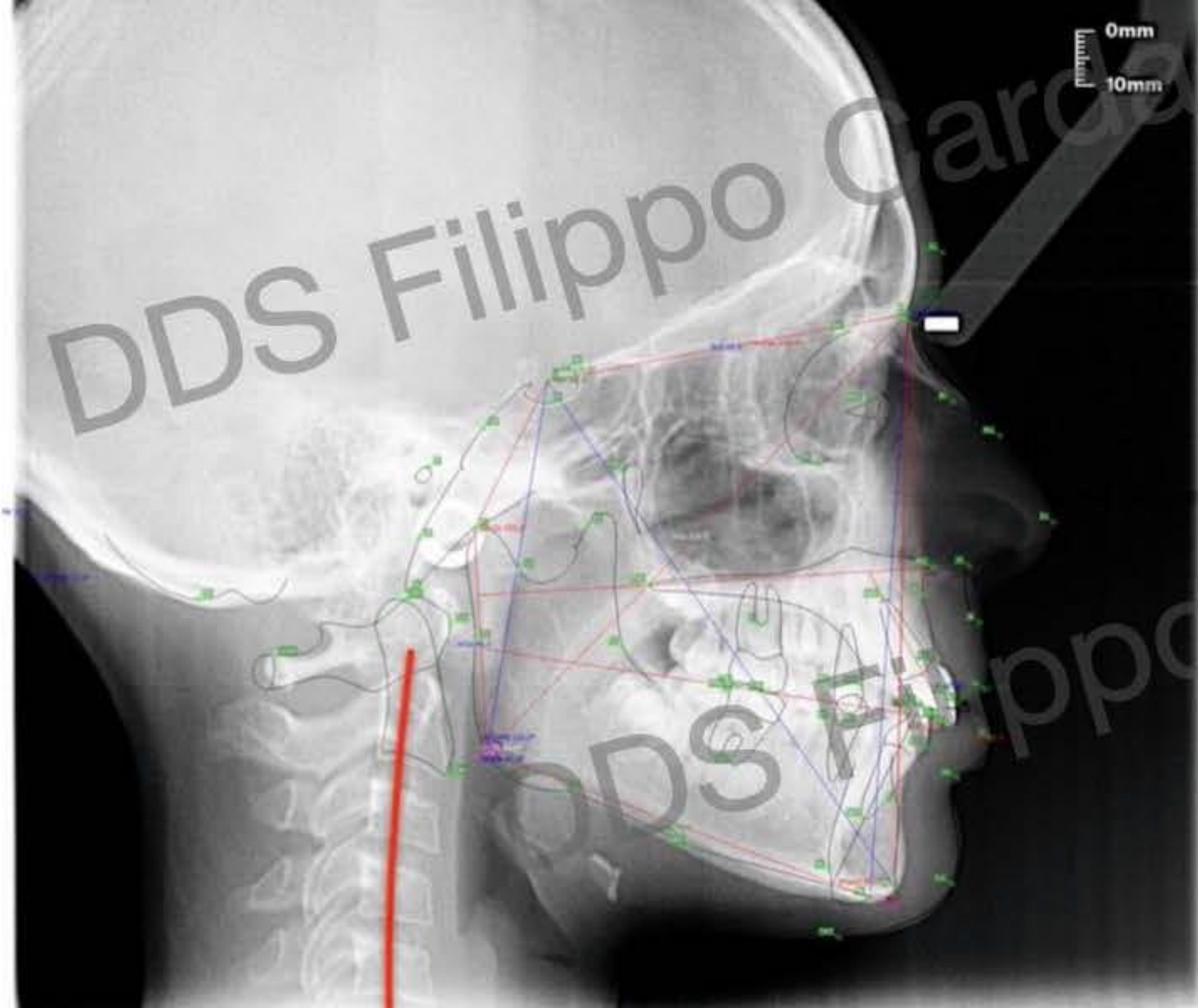








The patient was treated with AMCOP Integral elastodontic appliance with flat mastication plane so as to promote the proper development of the maxillary teeth with subsequent lingual reeducation. Correct lingual posture was achieved partly with speech therapy and partly with elastodontic therapy so as to make the growth path functional and stable over time. The duration of therapy was 16 months with use of the appliance for 1 hour during the day and every night for the first 6 months and then only at night for the other 10 months .



Conclusions

This case shows how elastodontic therapy is indeed the ideal treatment in growing patients and how muscle reconditioning is accompanied by postural improvement, as can be seen in the following images showing the correction of posture following the therapy itself. In addition, the case allows us to understand that the determinate feature of the elastodontic appliance is the compound, as it must provide the right resistances in order to obtain a correct occlusal relationship.